

Living Lab Insect Guide

In SENĆOŦEN, ləkʷəŋən,
English, and Latin



NEÇIM ČOLI
nəkʷim čali

Western Polished Lady Beetle
Cycloneda polita



NEKIX SNÁT, ÁLEKEM
neqix snétʔéləqəm

Audouin's Night-stalking Tiger Beetle
Omus audouini



SKEMW, ÁĆSEN, ÁLEKEM
səqʷəmxʷʔéčsenʔéləqəm

Narrow-collared Snail-eating Beetle
Scaphinotus angusticollis



LELEJ, OSES SEMSEMÍYE
lələč, əsəs səmsəməyə

Yellow-faced Bumble Bee
Bombus vosnesenskii



NEÇIMOLEŠ, EUEĆ SEMSEMÍYE
nəkʷim čali səmsəməyə

Orange-rumped Bumble Bee
Bombus melanopygus



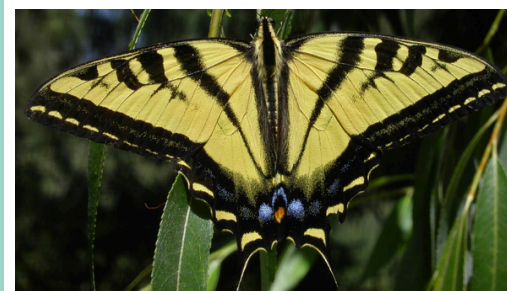
ŠTOŦLE SEMSEMÍYE
štʰatʰlə səmsəməyə

Western Leafcutter Bee
Megachile perihirta



PELQ, QELAXEN
pəlqʔkʷələxən

Lorquin's Admiral
Limenitis lorquini



SXÁLEŁ, AXEN
sxélətʔeʔən

Western Tiger Swallowtail
Papilio rutulus

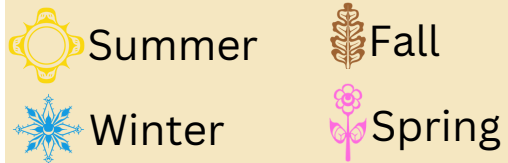


TÁŦEWEN, AXEN
tʰétʰəxʷəŋʔeʔən

Echo Azure
Celastrina echo

Legend

Seasons



Attributes



Environment



Living Lab Insect Guide



Discover our relatives! These insect species can be found in the traditional territories of Coast Salish Indigenous peoples; learn their names in WSÁNEĆ (SENĆOŦEN) and Songhees- Esquimalt (ləkʷəŋən), English and Latin.

Credits: Language/Meaning: SELILIYE (Belinda Claxton), J,SIN̄TEN (John Elliott Sr.), ƆOSINIYE (Linda Elliott), SXEDƧELISIYE (Renee Sampson), TE, TES, ƧE (Lyndsey Henry), Tye Swallow

Photo Credits: Creative Commons

Graphics and Layout: Jessica Joseph, Kyle Clarke

Core Partners: NSERC Promo Science, Ministry of Advanced Education, Real Estate Foundation of BC

Living Lab Network
www.livinglabproject.ca



XEƧFITEN, EUÉƧ ƧEM, ƧEM, ƧIYOS
xə́kʷθitəŋʔəuəƆ θəmʔθəmʔx̣ʷiyas

Pacific Forktail
Ichnura cervula



SPEŁKEN ƧEM, ƧEM, ƧIYOS
spə́łqən θəmʔθəmʔx̣ʷiyas

Cardinal Meadowhawk
Sympetrum illotum



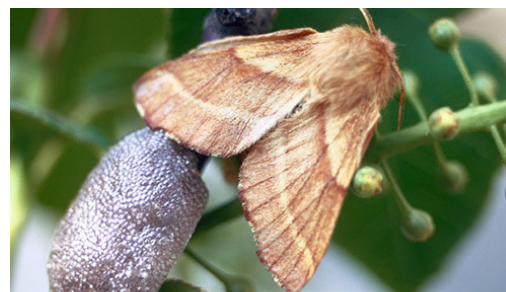
TEƧ, SDELƧ ƧEM, ƧEM, ƧIYOS
təθʔstə́lq θəmʔθəmʔx̣ʷiyas

Eight-spotted Skimmer
Libellula forensis



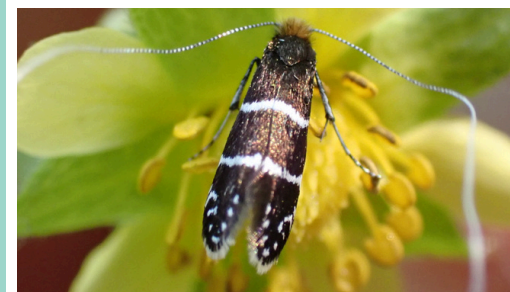
PÁPE, IƧES QELAXEN
pə́pəʔikʷəs kʷələxən

Woodland Skipper
Ochlodes sylvanoides



STIŠTEN MEMEXÁL, AXEN
sṭʰistən məməxə́łʔəxən

Western Tent Caterpillar Moth
Malacosoma californicum



KÁTELƧ, AXEN
kə́təʔətƆʔəxən

Ocean Spray Fairy Moth
Adela septentrionella



LELEJ KEM, KEM, IƧEN
lələ́Ɔ qəmʔqəmʔiƆən

Western Yellowjacket
Vespula pensylvanica



ƧEƧÍYEXENE,
qəqəyə́xənəʔ

Dark-edged Bee-fly
Bombylius major



JE, JEMIL, ÁLEƧEM
čəʔčə́milʔələqəm

San Francisco Lacewing
Nothochrysa californica